

⚠ OPERATING/MAINTENANCE SAFETY

- Lower to ground, stop engine, place all controls in neutral, set park brake and remove ignition key before servicing, adjusting or repairing.
- Be careful when working around or maintaining a high pressure hydraulic system. Wear the proper hand and eye protection when searching for a pin hole leak in a hose or fitting.
- Place safety stands or large blocks under the frame before removing the tires or working beneath the machine.
- Do not allow riders.
- Clear the area of bystanders.
- Stay well back from machine when operating. Keep others away.

PRE-OPERATION CHECKLIST

Before operating the machine and each time thereafter, the following areas should be checked off:

- Lubricate machine per "Maintenance Schedule"
- Ensure the Hitch Clevis is set at the correct height for the tractor drawbar and trailer height.
- Ensure that the machine is properly attached to the tractor using a drawbar pin with provisions for a mechanical retainer. Make sure that a retainer such as a Klik pin is installed.

NOTE: It is important to pin the draw bar in the central location only.

- Check tires and ensure that they are inflated to the specified pressure. (52 PSI / 358 kPa)
- Ensure that a safety chain on the hitch is installed.
- Check oil level in the tractor hydraulic reservoir. Top up as required.
- Check all bolt tightness.
- Inspect all hydraulic lines, hoses, fittings and couplers for tightness. Tighten if there are leaks. Use a clean cloth to wipe any accumulated dirt from the couplers before connecting to the tractor's hydraulic system.
- Check tines, remove entangled debris. Replace damaged tines. If tines are 16 in. or less in length, they should be replaced. (New tine length: 26 in.)

MAINTENANCE SCHEDULE

After operating for initial 2 hours:

1. Check all hardware. Tighten as required.
2. Check all hydraulic system connections. Tighten if any are leaking.

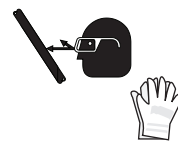
After operating for initial 8 hours:

1. Check all hardware. Tighten as required.
2. Check all hydraulic system connections. Tighten if any are leaking.
3. Re-torque all bolts on harrow sections and mounting brackets.

Daily - 8 Hours

- Hydraulic Fluid Leaks
- Damaged Hoses
- Check Tire Pressure

Tires: 400/60 x 15.5: **52 PSI (358 kPa)**



Weekly - 25 Hours

- Wheel Cylinder Pins & Pivot Bushing
- Ratchet Jack Pins
- Check Tine Wear
- Clean Safety Signs



Annually - 200 Hours

- Bolt Tightness
- Wheel Bearings
- Latch Mechanism



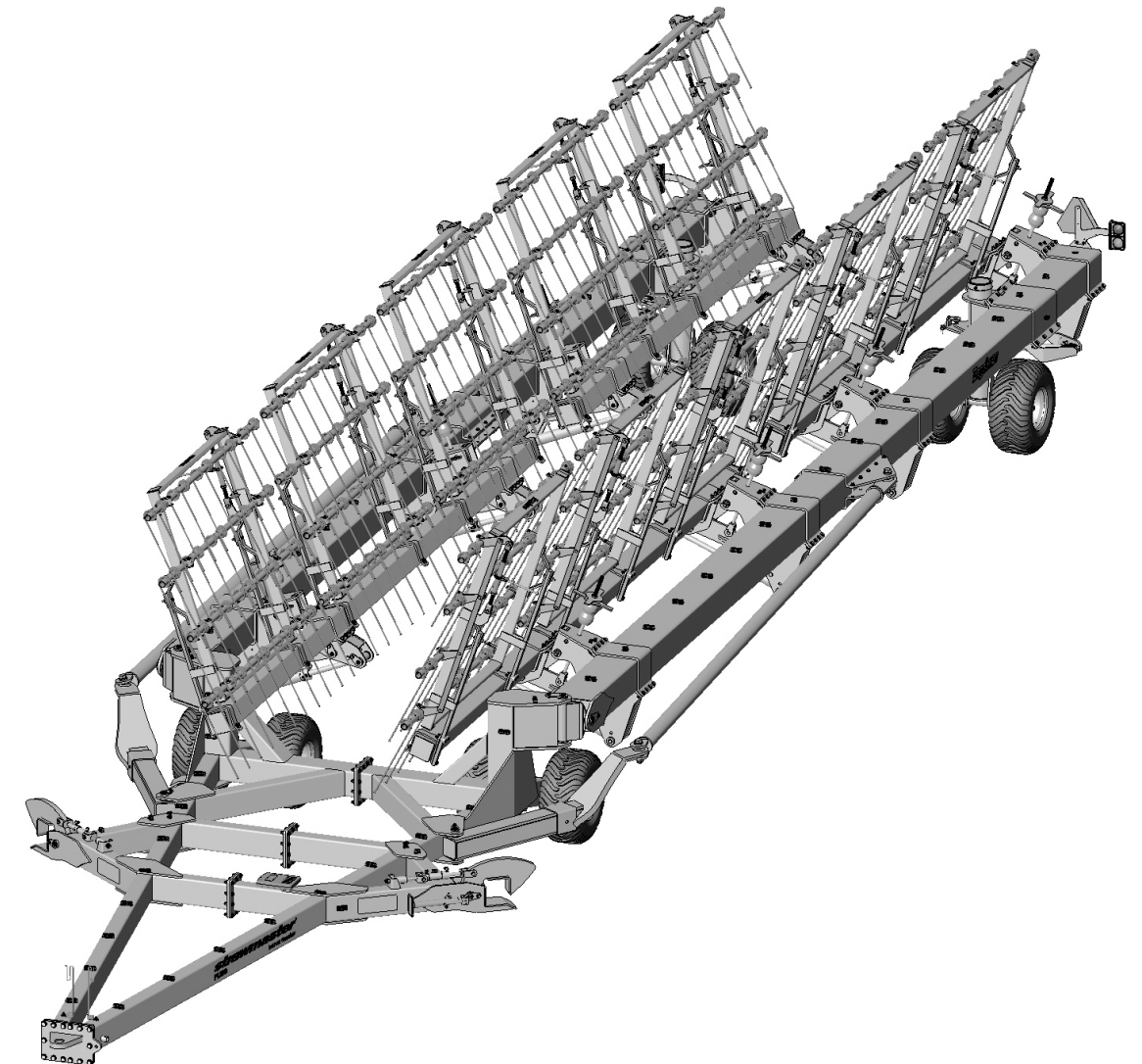
IMPERIAL TORQUE SPECIFICATIONS

(based on "Zinc Plated" values)

Size	Grade	
	Grade 5	Grade 8
	lb.ft (N.m)	lb.ft (N.m)
1/4"	7 (10)	10 (14)
5/16"	15 (20)	20 (28)
3/8"	25 (35)	35 (50)
7/16"	40 (55)	60 (80)
1/2"	65 (90)	90 (120)
9/16"	90 (125)	130 (175)
5/8"	130 (175)	180 (245)
3/4"	230 (310)	320 (435)
7/8"	365 (495)	515 (700)
1"	550 (745)	770 (1050)
1-1/8"	675 (915)	1095 (1485)
1-1/4"	950 (1290)	1545 (2095)
1-3/8"	1250 (1695)	2025 (2745)
1-1/2"	1650 (2245)	2690 (3645)

strawmaster[®]pro

heavy harrow



142637 v1.1

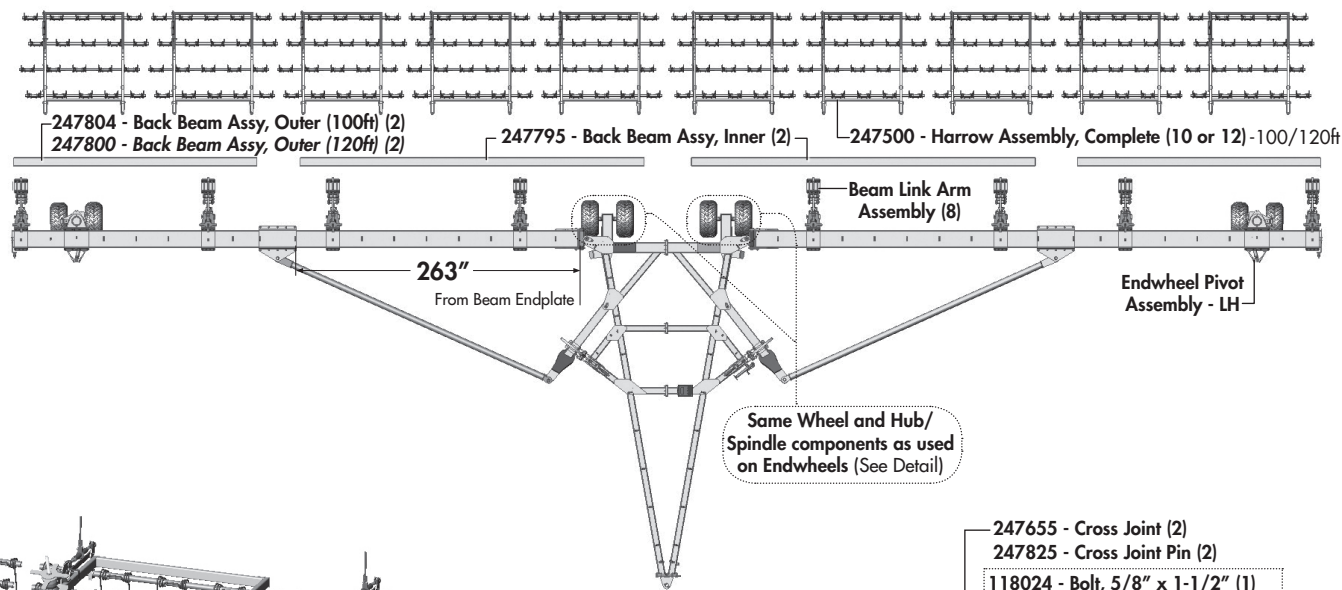
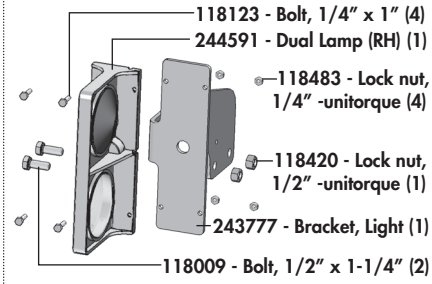
DEGELMAN INDUSTRIES LTD.
 BOX 830-272 INDUSTRIAL DRIVE,
 REGINA, SK, CANADA, S4P 3B1
 FAX 306.543.2140 PH 306.543.4447
 1.800.667.3545 DEGELMAN.COM

STRAWMASTER[®] PRO
100' & 120'

Serial Numbers SM-7437 up to 7468

Strawmaster Pro Parts Overview

RH Light Overview

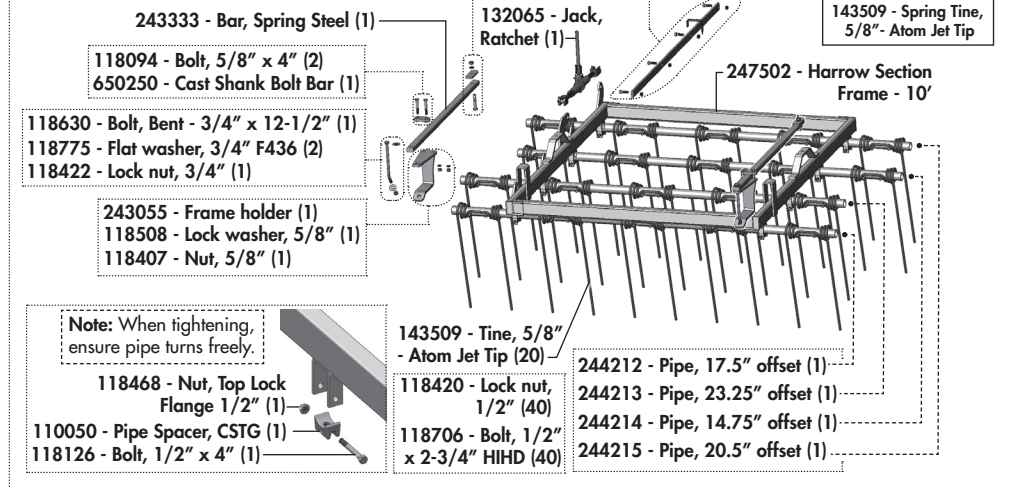


247500 - Harrow Assembly Complete, 10'/4 Row

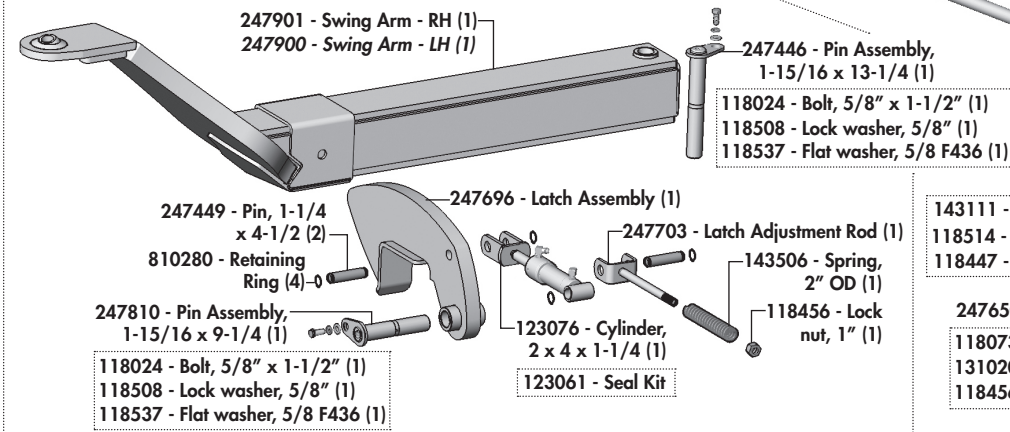
- 118410 - Nut, 3/4" (1)
- 118509 - Lock washer, 3/4" (1)
- 243061 - Bar, Back-up (1)
- 118119 - Bolt, 3/4" x 4" (1)

- 244217 - Link bar, 4 hole (1)
- 244017 - Indicator pointer (1)
- 118625 - Bolt, 5/8" x 2" UNF (5)
- 118700 - Lock nut, 5/8" UNF (5)

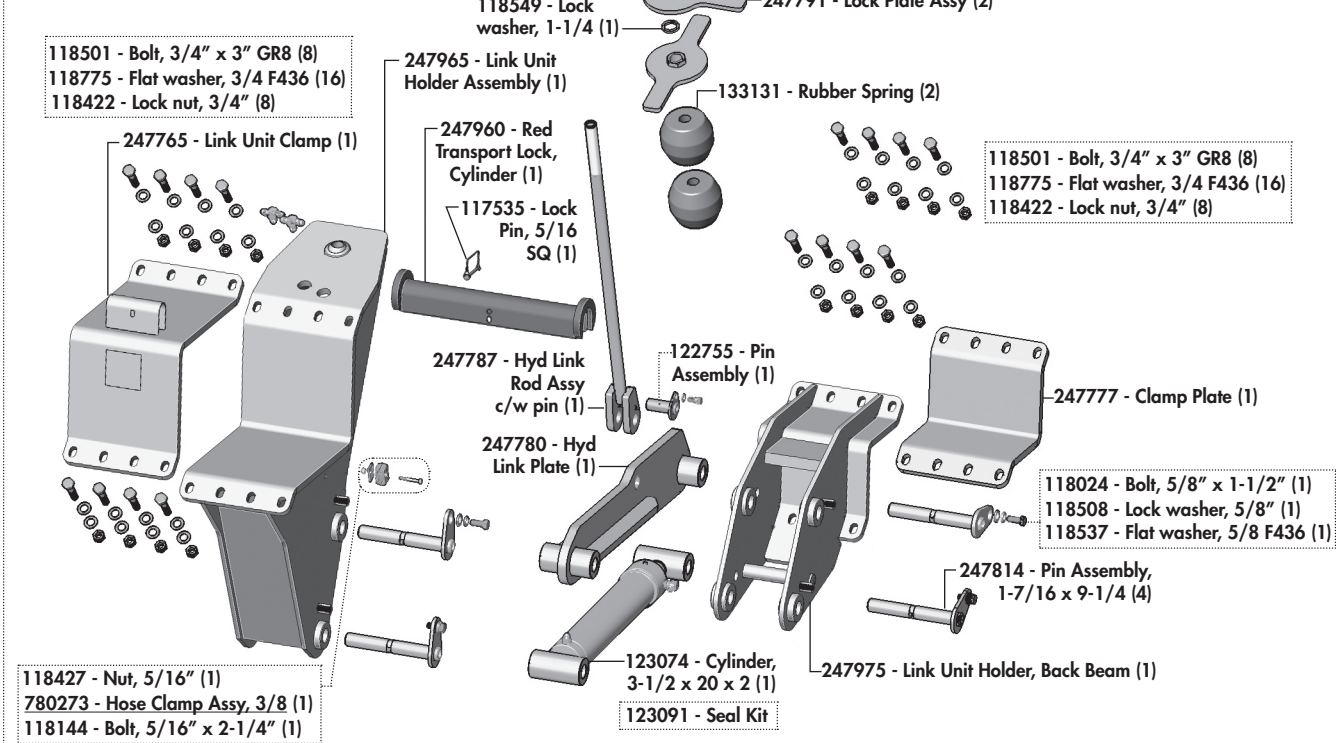
Quantity of Tines Required	
100'	120'
200	240
143509 - Spring Tine, 5/8" - Atom Jet Tip	



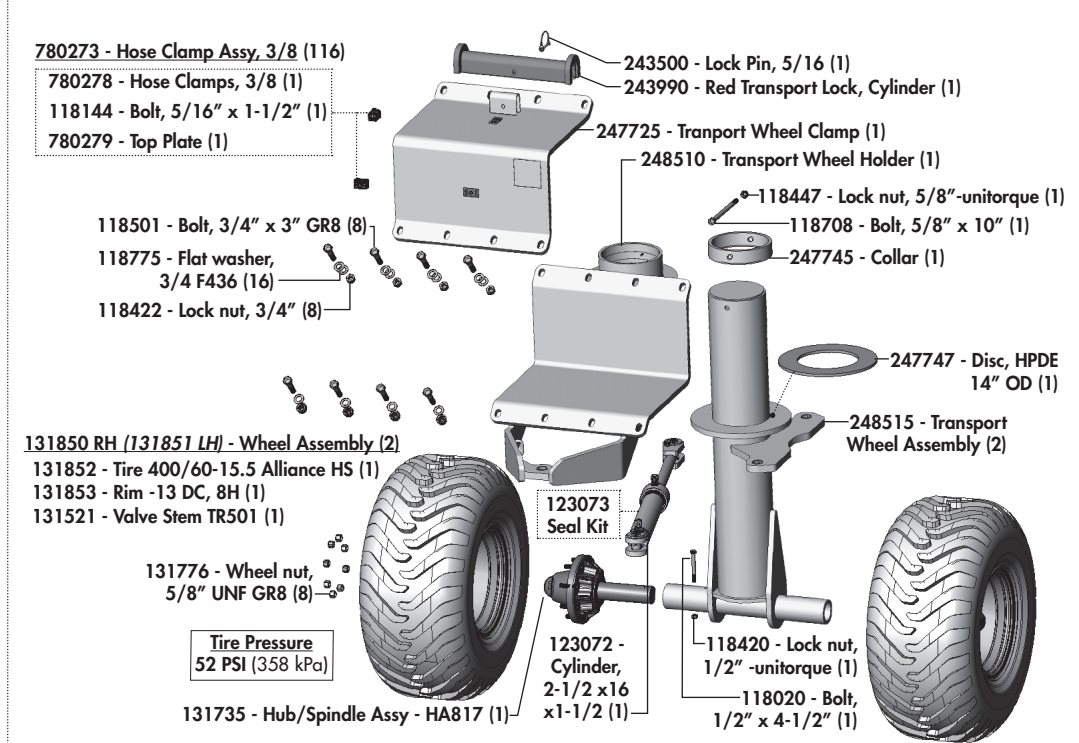
Swing Arm & Latch Overview



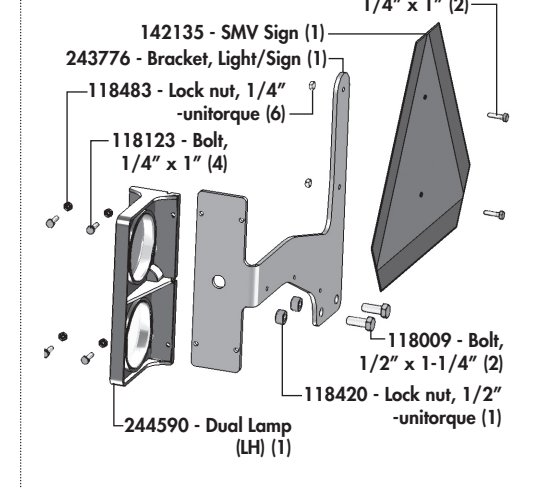
Beam Link Arm Assembly Overview



Endwheel Pivot Assembly Overview (LH Shown)



LH Light Overview



strawmasterpro
heavy harrow

100' & 120'

Serial Numbers SM-7437 up to 7468

142637 - Strawmaster Pro (19-August-2016)